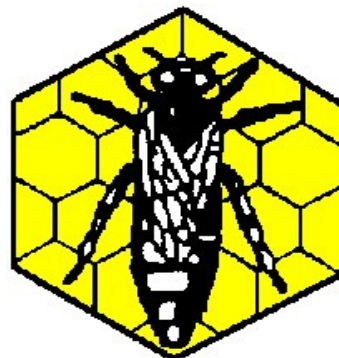


# Cardiff, Vale and Valleys Beekeeping Association



President: Prof. R S Pickard  
Chairman: John King (01443 400798)  
e.mail: johnking1949@gmail.com  
Secretary: Annie Newsam (02920 868756)  
e.mail: annienewsam@hotmail.co.uk

## Newsletter : July 2010

Yes -  
that's  
what I  
thought!

Why are  
the  
wings  
red?



Is it a  
new strain  
of bees  
-  
or some  
newly  
discovered  
dread  
disease?

### Dates for your Diary

#### **URGENT REQUEST for Volunteers**

Please contact **Barbara Chick (tel.02920 597275)** if you are able to give time to be a steward at the Royal Welsh Show which will be held on **19th - 22nd July**. Volunteers will have a free pass to the show. Volunteers for half days most welcome.

#### **Summer Apiary Meetings - May to September**

**Sunday, July 25th at 2.30pm.** - an out-apiary meeting to be held at the Assn. Apiary which is housed on Dinah Sweet's property. Tel:02920 869242  
Address: Graig Fawr Lodge, Caerphilly, CF8 1NF. Please telephone if you need directions.

**Saturday, 21st August at 2.00pm.** - an out-apiary meeting to be held at the Assn. Apiary at Dyffryn Gardens. Apiary managers Harold and Barbara look forward to seeing you there.

**Saturday, 31st July** - Basic Practical Exam in Beekeeping takes place - entry now full.

**Sunday 22nd August** - Woodland Festival held at Coopers Field, Cardiff. 10.00am.- 4.30pm. This is a nice event in which the Assn., through Barbara, has participated for a number of years.

Should you have any contributions for the Newsletter (articles/photos etc.) or wish to place an advertisement, please contact Cherry Clark at: 14, Rudry Close, Caerphilly, CF83 3EU or e.mail: cvvbees@sky.com  
Advertising rates are:  
Commercial/semi-commercial traders @ £5.00 p.a. for approx. 1/6th page in 11 monthly issues.  
One off adverts @ £1.00. Non-commercial adverts (i.e. sale of surplus equipment) are free to members for a single entry.

### **Why has this worker bee been marked?**

Deryck Johnson

One of my colonies, over a period of two to three weeks changed character dramatically. I was used to strolling amongst the hives without any armour just to see what they were taking in and to have a chat with them. I didn't bother them and they didn't bother me; a lovely amicable existence.

Gradually they became a little more aggressive until they were going for anyone who got within 25m of the apiary. There would be 20 to 50 of them all round my head screaming at my veil and stinging my gloves. It was impossible to source them as these nasties followed you down the row of hives such that every colony appeared to be the same. Although I had a rough idea which hive it was, I was wary of taking the ultimate step in case I got it wrong.

I mark my queens so why not mark the workers? That evening I got an aerosol of fluorescent red paint from the workshop and, after giving it a good shake, donned my armour again and waded into the fray. I waited until I had got a large crowd of agitated bees flying round and then stepped briskly back and sprayed a cloud of red paint into the air.

Next morning I opened the suspect hive and, lo and behold, there was my evidence.

The queen was promptly dispatched to the hive in the sky and a nucleus placed alongside for uniting the next day.

A great relief and hopefully it will be a happy ending.

*Printed with kind permission from The Essex Beekeeper (No.547, July 2010)*

*Cover photo:Deryck Johnson*

*(Presumably the spray is fine enough not to impede the bee.)*

### **Chairmans Report**

Once again another month has passed and the weather has been very favourable for the bees. As an association we have not been idle. At the beginning of July we visited the apiary at the National Botanical Garden in Llanarthne just outside Carmarthen. Chris Adams, who manages the site, gave us an account of how the apiary operates and the various educational aspects which focus on using video cameras to project the bees flying in and out of hives on foraging trips upon screens in the observation area. We found it fascinating to watch the bees flying and so did members of the public who came in.

The swarming season is just about over but you will still need to check colonies for queen cells. In some cases they might be supercedure cells so be very careful about destroying all of them. We have supplied about 20 members with swarms this year and others have had nuclei from members at favourable prices, so please look after them.

Recently the blackberry has been in flower and the supers have started to fill with nectar. I noticed that Himalayan balsam is also coming into flower. All of this is good news for the bees and ourselves as it shows our labours are being rewarded and we should have a honey harvest this year - the first good one for 3 seasons!

Those of you new to bee keeping will find that the bees fill the frames in the centre of the supers first. When these are full and sealed move them to the outer edges of the super. It gives the bees an easier life. When your super is full move it to the top of the hive and place the empty super above the queen excluder.

If you run out of supers and have honey to extract the association has an extractor that you can hire. Please contact Dinah Sweet on 02920 869 242 to check it is available.

We have been asked to publicise the Bristol Honey Show at the end of August. Details of classes and entry forms can be found at : [www.bristolhoneyshow.co.uk](http://www.bristolhoneyshow.co.uk)

Finally let us hope the good weather continues and we have a good honey harvest.  
John

**NB: Peter Shaw's new mobile phone number is 07758 131 440**

A few useful hints on the use of crown/clearer boards which I also found in the Essex Beekeeper.

Richard Alabone (Mr Beesey) has found that this practice reduces the number of half-filled frames and boxes.

- (1) Keep an empty super above the crown board - this can be moved and placed over the queen excluder, above the brood box, to replace a full honey super.
- (2) He uses the crown board to clear the bees prior to extraction for only 12 hours (24 is usually promoted) as the honey can become cooled and, therefore, harder to extract. A bee brush is used to remove stragglers.
- (3) Frames with granulated honey or those needing to be cleared of stores can be placed above the crown board.
- (4) For the preventing the worst of wax moth damage in July/August - keep frames 3/4inch apart as the moth is unable to spin the silk necessary to keep it warm.

### Buckfast Visit 8<sup>th</sup> June 2010

Gregg Nuttgens

A coachload of beekeepers from the Cardiff BKA, and a handful from the Bridgend BKA, travelled to Buckfast Abbey in Devon, to visit the Benedictine Abbey and the Apiary made famous by Brother Adam.

The weather was warm and sunny, and we managed to avoid the torrential showers which were forecast for many areas on the day. On arrival, we were divided into two groups, one visiting the Abbey and shops, while the other visited the Apiary, and changing over after lunch.

The Apiary visits were led by Clare Densley, who helps to run the Apiary. She explained how, since Brother Adam's death in 1996, the Apiary had been reduced in size and the commercial production of 'Buckfast Queens' had been discontinued. The Apiary continues to carry out research, particularly into disease resistance, and also runs courses in beekeeping.

Clare described how Brother Adam bred his 'Buckfast Queens' and how he maintained the purity of the strain by using an isolated apiary on Dartmoor to raise drones. She described how the beekeeping work had formerly been integrated with the monks' activities, and how the all the monks looked forward to the annual moving of the hives onto Dartmoor for the heather, something they all got involved in.

The bees we examined were very gentle and easy to handle, and appeared to be building up well. She showed us how the Dadant hives were being converted to Langstroths - the Dadant frames being difficult to handle, especially for beginners.

All in all, this was a very interesting and informative visit, in beautiful surroundings, ably organised by Julia Bartlett of Cardiff BKA.



### Other Officers and Committee Members

Vice Chairman: Peter Shaw (01633 897195)  
Treasurer: Lewis Roberts (02920 761149)  
e.mail: lewisroberts@hotmail.com  
Programme Secretary: Barbara Chick (02920 597275)  
e.mail: beechick@madasafish.com  
Apiary Manager (Caerphilly): Dinah Sweet (02920 869242)  
e.mail: sweetd@cardiff.ac.uk  
Apiary Manager (Dyffryn): Harold Williams (01446 750709)  
e.mail: maryeharding@virgin.net  
Librarian: Edmund Thomas (02920 811928)  
e.mail: edmund@boris.fsworld.co.uk  
Julia Bartlett (01633 441008) - Ray Strange (02920 887044)  
John Jennings (02920 861761) - David Corrick (02920 765109)

### LISVANE HONEY FARM

(incorporating GRAIG APIARIES  
and  
NATURES LITTLE HELPERS)

Unit 8, Mill Farm Industrial Estate, St. Mellons  
Road, Lisvane, Cardiff

Agents for Thornes  
and  
Bee Basic Bee Supplies

Contract Extraction Service  
and  
Manufacture of Balms, Soaps and Candles

**Open: 9am. - 1pm. Saturdays**  
(other times by appointment, please)  
**Tel: Peter Shaw - 01633 897195 / 07758131440**  
(for Bee supplies)  
**Tel: Nigel Harris - 07970293016**

Please note that should you discover that you have not been receiving your copy of The Welsh Beekeeper magazine, you will need to contact the Treasurer, Lewis Roberts, as he supplies the list to the WBKA mailing officer. It may also be that, if you are not on Lewis' list, your insurance is void.

A reminder that Assn. polo shirts can be purchased from Annie Newsam, Stonecroft, Mountain Road, Bedwas, Caerphilly, CF83 8ER. The shirts cost £15.00 each, are black with a gold embroidered logo, available in sizes Med., Large, or XL. Please note sizes are generous. Please make cheques payable to 'Cardiff and Vale BKA'. The photo shows John & June King modelling the polo shirts. John won the silver ware at the honey show last year. June designed the logo.



### BEESWAX FOUNDATION

**L & GR Chirnside**  
**Tel: 01837 880625**

Foundation available at a straight exchange for wax.

Beekeeping supplies available from stock.

Equipment new and used also available.

**Bryn y Pant Cottage,**  
**Upper Llanover,**  
**Abergavenny**  
**NP7 9ES**

Would any member giving up beekeeping or those who have surplus bees/equipment kindly contact one of the following Officers who will pass such items on to other beekeepers in the Assn.

John King - tel: 01443 400798  
Annie Newsam - tel: 02920 868756  
Barbara Chick - el: 02920 597275

**Would members inform the Secretary of any changes in address/e.mail etc.**

All photos are copyright Cherry Clark unless otherwise stated.